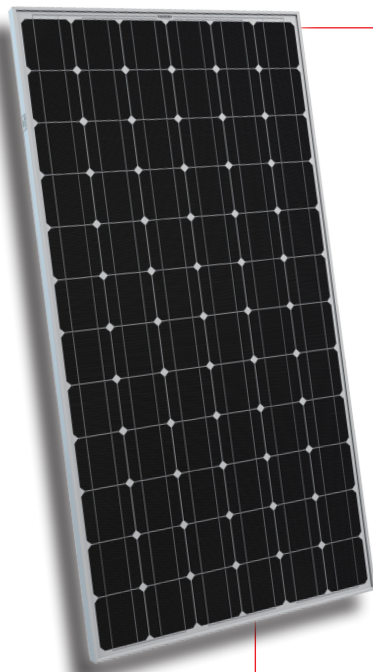


# STP200S - 24/Ad+ STP195S - 24/Ad+



## 200 Watt MONOCRYSTALLINE SOLAR MODULE



### Features



#### High module conversion efficiency

15.7%

Module efficiency up to 15.7% achieved through advanced cell technology and manufacturing capabilities



#### Self-cleaning & anti-reflective

Higher module efficiency from anti-reflective, hydrophobic layer with higher light absorption and minimal surface dust



#### Positive tolerance

0/+5%

Guaranteed positive tolerance of 5% delivers higher outputs reliably



#### Excellent weak light performance

Excellent performance under low light conditions



#### Extended wind and snow load tests

3800Pa  
5400Pa

Module certified to withstand extreme wind (3800 Pascal) and snow loads (5400 Pascal) \*



#### Suntech current sorting process

2%

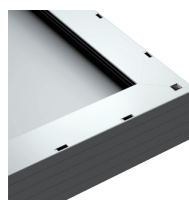
System output maximized by reducing mismatch losses up to 2% with modules sorted & packaged by amperage

Certifications and standards:  
IEC, CE, PV Cycle, PCII, MCS



### Trust Suntech to Deliver Reliable Performance Over Time

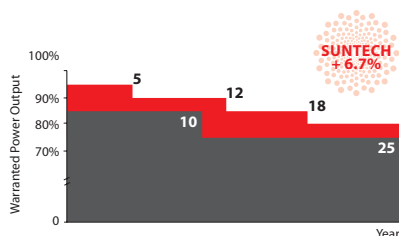
- World's No.1 manufacturer of crystalline silicon photovoltaic modules
- Unrivaled manufacturing capacity and world-class technology
- Rigorous quality control meeting the highest international standards: ISO 9001: 2008, ISO 14001: 2004 and ISO17025: 2005
- Tested for harsh environments (salt mist and ammonia corrosion testing: IEC 61701, DIN 50916:1985 T2)\*\*



### Superior Frame Design

Specially designed drainage holes and rigid construction prevent frames from deforming. Screwless frame design for a long term durability.

### Industry-leading Warranty based on Pnom



- Based on nominal power (Pnom)
- 25-year transferrable power output warranty: 5 years/95%, 12 years/90%, 18 years/85%, 25 years/80% \*\*\*
- Warrants 6.7% more than the market standard over 25 years
- 10-year material and workmanship warranty

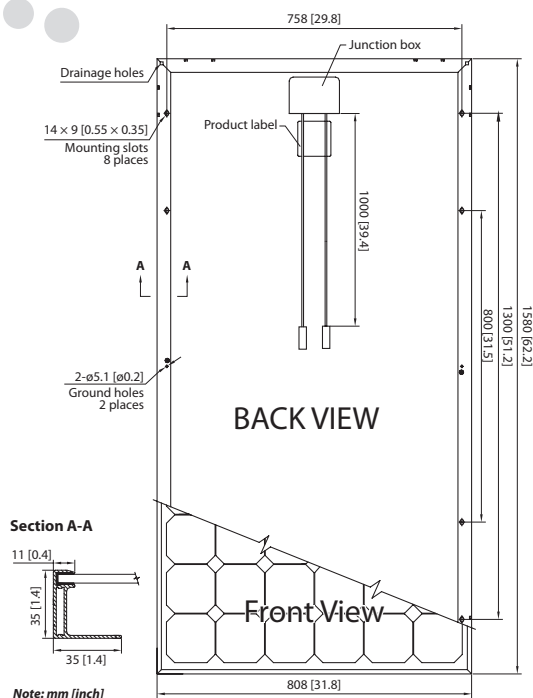


### Most modern IP67 Rated Junction Box

Supports installations in multiple orientation. High performance, low resistance connectors ensure maximum output for highest energy production.

\* Please refer to Suntech Standard Module Installation Manual for details. \*\* Please refer to Suntech Product Near-coast Installation Manual for details.  
\*\*\* Please refer to Suntech Product Warranty for details.

# STP200S - 24/Ad+ STP195S - 24/Ad+



## Electrical Characteristics

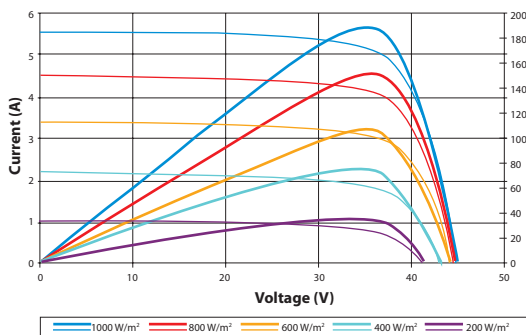
STC	STP200S-24/Ad+	STP195S-24/Ad+
Optimum Operating Voltage (Vmp)	36.8 V	36.6 V
Optimum Operating Current (Imp)	5.45 A	5.33 A
Open Circuit Voltage (Voc)	45.5 V	45.4 V
Short Circuit Current (Isc)	5.81 A	5.69 A
Maximum Power at STC (Pmax)	200 W	195 W
Module Efficiency	15.7%	15.3%
Operating Module Temperature	-40 °C to +85 °C	
Maximum System Voltage	1000 V DC (IEC)	
Maximum Series Fuse Rating	15 A	
Power Tolerance	0/+5 %	

STC: Irradiance 1000 W/m<sup>2</sup>, module temperature 25 °C, AM=1.5;  
Best in Class AAA solar simulator (IEC 60904-9) used, power measurement uncertainty is within +/- 3%

NOCT	STP200S-24/Ad+	STP195S-24/Ad+
Maximum Power at NOCT (Pmax)	145 W	142 W
Optimum Operating Voltage (Vmp)	33.2 V	33.2 V
Optimum Operating Current (Imp)	4.37 A	4.27 A
Open Circuit Voltage (Voc)	42.2 V	41.8 V
Short Circuit Current (Isc)	4.68 A	4.61 A

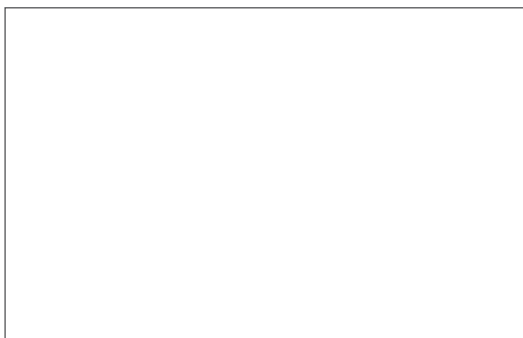
NOCT: Irradiance 800 W/m<sup>2</sup>, ambient temperature 20 °C, AM=1.5, wind speed 1 m/s;  
Best in Class AAA solar simulator (IEC 60904-9) used, power measurement uncertainty is within +/- 3%

## Current-Voltage & Power-Voltage Curve (195S-24)



Excellent performance under weak light conditions: at an irradiation intensity of 200 W/m<sup>2</sup> (AM 1.5, 25 °C), 95.5% or higher of the STC efficiency (1000 W/m<sup>2</sup>) is achieved

## Dealer information



Specifications are subject to change without further notification

## Temperature Characteristics

Nominal Operating Cell Temperature (NOCT)	45±2°C
Temperature Coefficient of Pmax	-0.45 %/°C
Temperature Coefficient of Voc	-0.34 %/°C
Temperature Coefficient of Isc	0.050 %/°C

## Mechanical Characteristics

Solar Cell	Monocrystalline silicon 125 × 125 mm (5 inches)
No. of Cells	72 (6 × 12)
Dimensions	1580 × 808 × 35mm (62.2 × 31.8 × 1.4 inches)
Weight	15.5 kgs (34.1 lbs.)
Front Glass	3.2 mm (0.13 inches) tempered glass
Frame	Anodized aluminium alloy
Junction Box	IP67 rated (3 bypass diodes)
Output Cables	TUV (2Pfg1 169:2007), UL 4703 4.0 mm <sup>2</sup> (0.006 inches <sup>2</sup> ), symmetrical lengths (-) 1000mm (39.4 inches) and (+) 1000 mm (39.4 inches)
Connectors	RADOX® SOLAR integrated twist locking connectors

## Packing Configuration

Container	20' GP	40' GP
Pieces per pallet	26	26
Pallets per container	12	28
Pieces per container	312	728